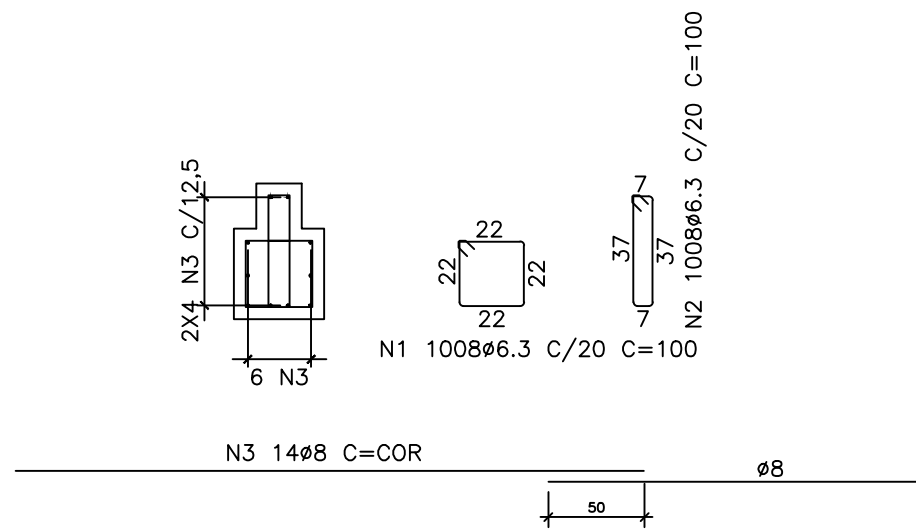
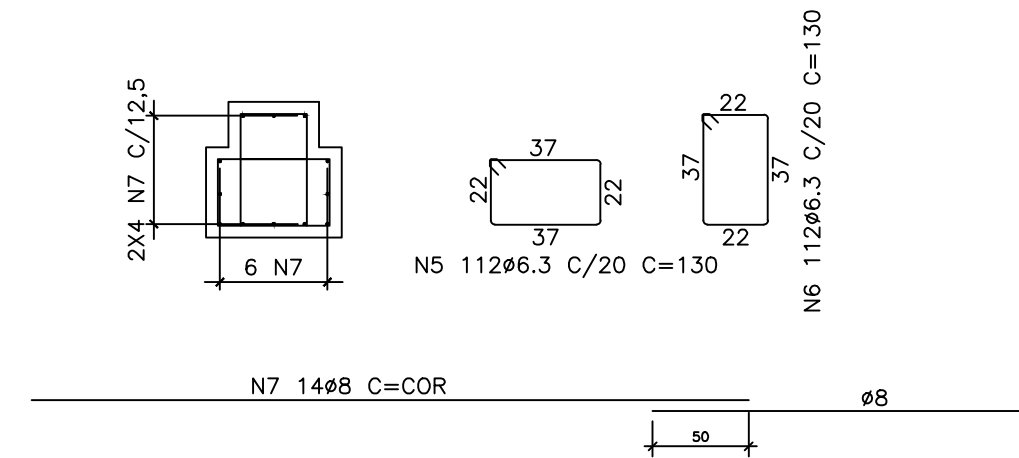


SAPATAS CORRIDAS

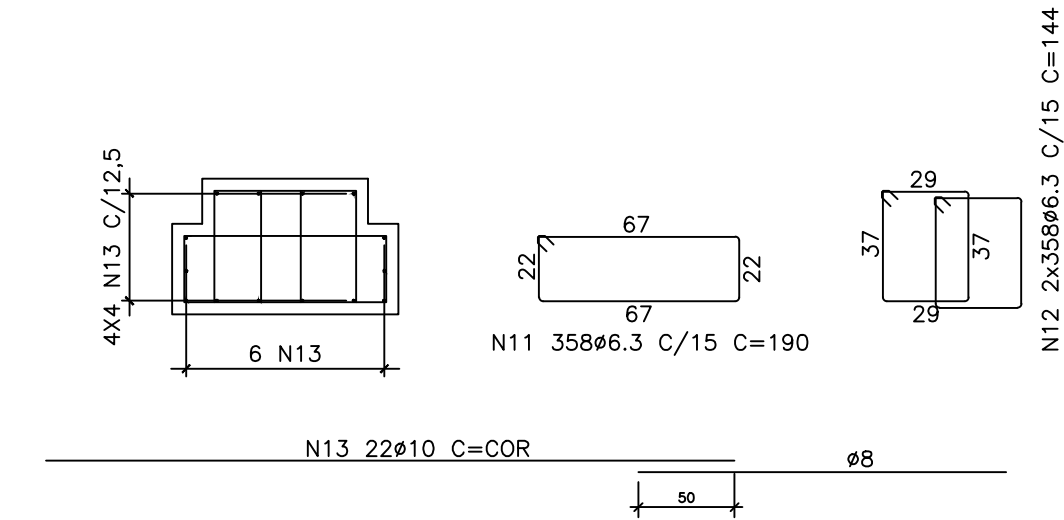
ESCALA: 1/25



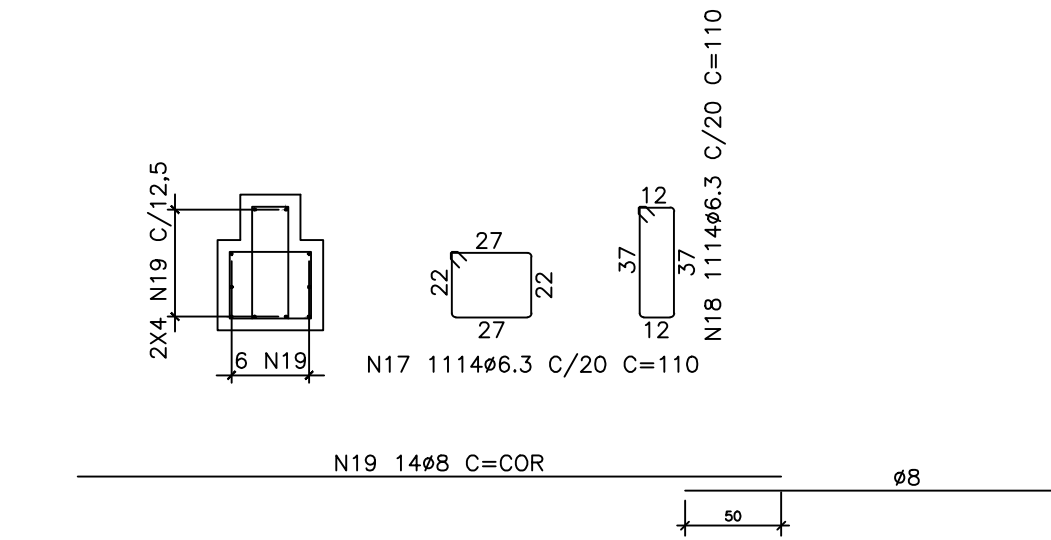
SC1 – SEC. TRANSV. TÍP.



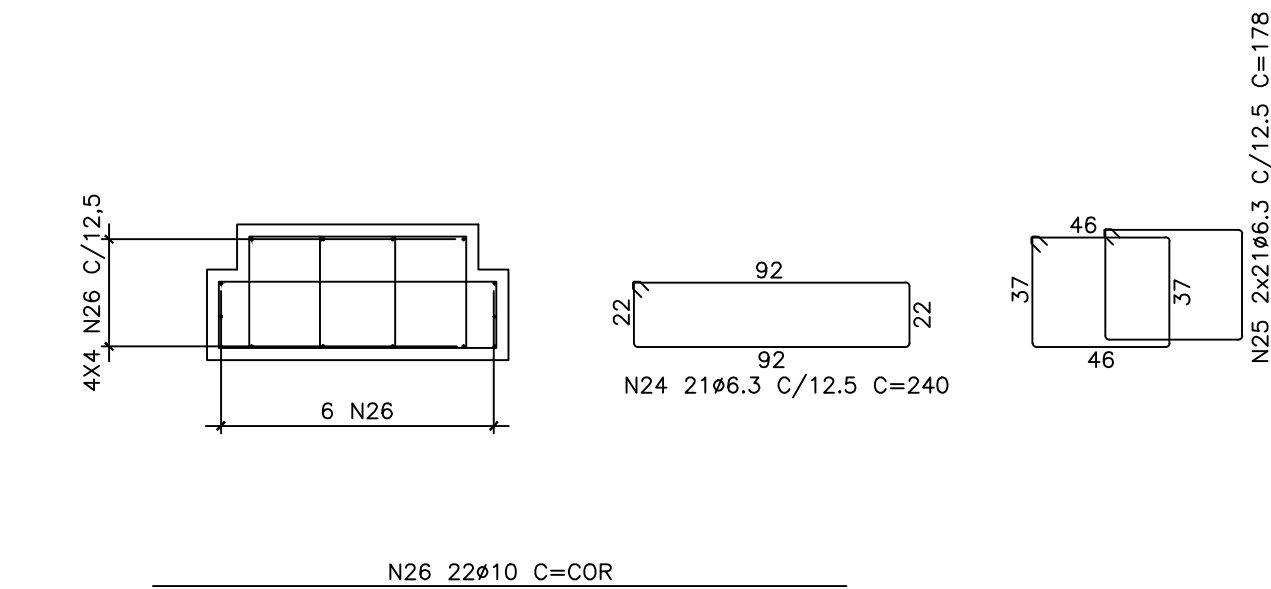
SC3 – SEC. TRANSV. TÍP.



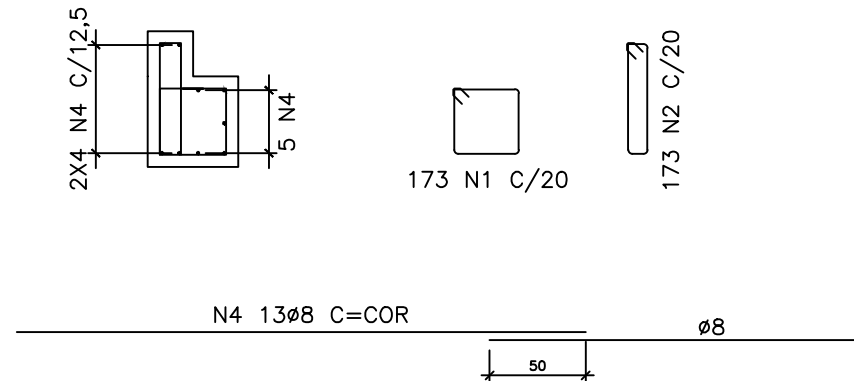
SC5 – SEC. TRANSV. TÍP.



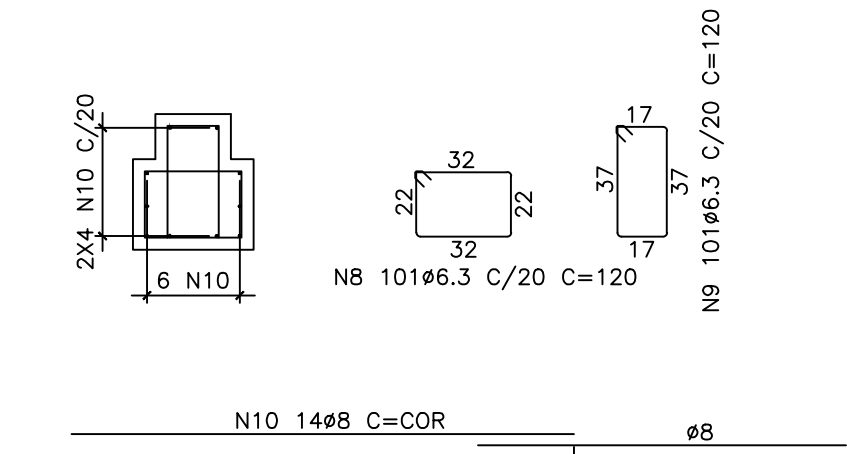
SC7 – SEC. TRANSV. TÍP.



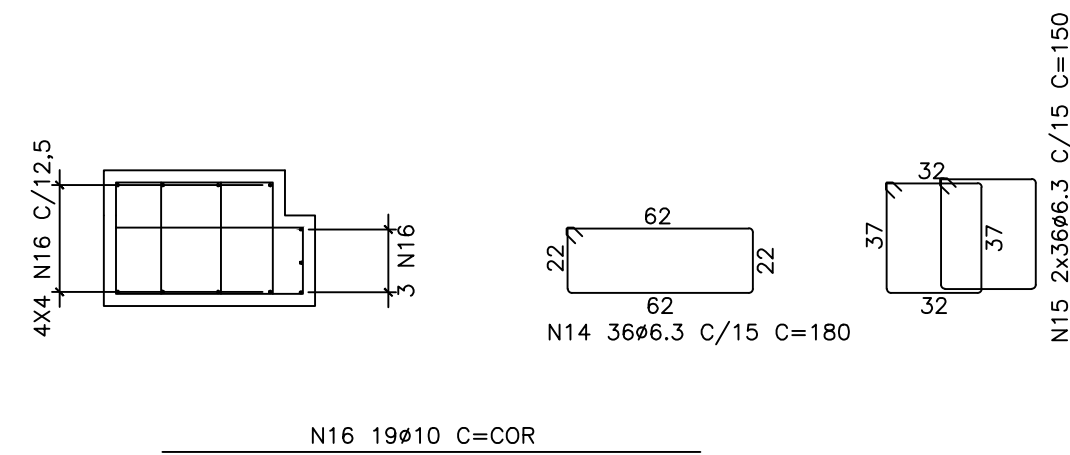
SC9 – SEC. TRANSV. TÍP.



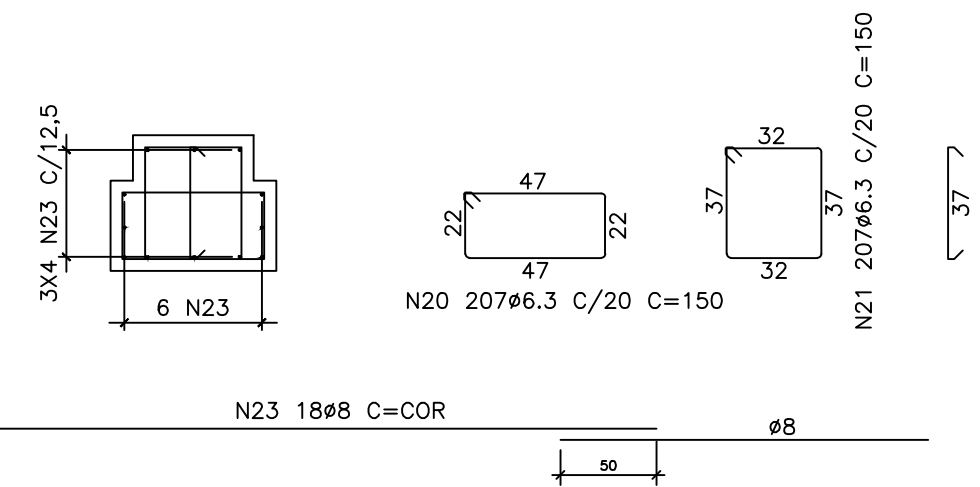
SC2 – SEC. TRANSV. TÍP.



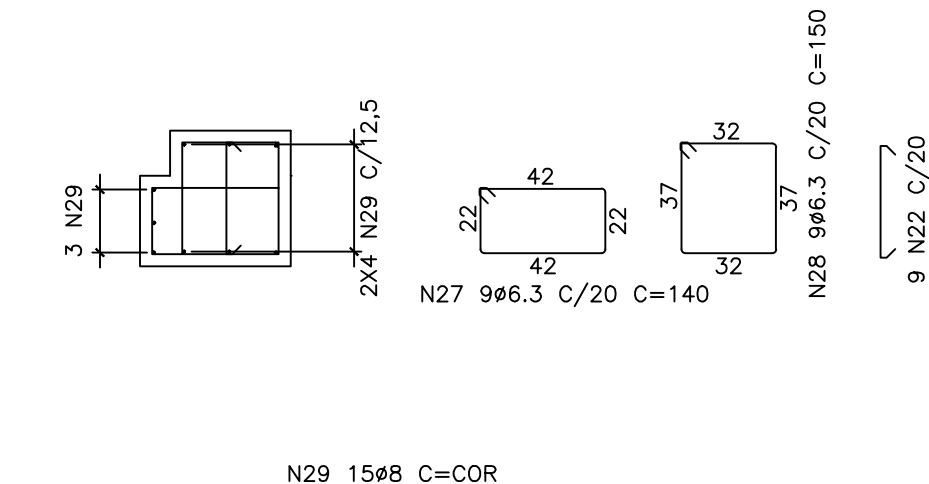
SC4 – SEC. TRANSV. TÍP.



SC6 – SEC. TRANSV. TÍP.



SC8 – SEC. TRANSV. TÍP.

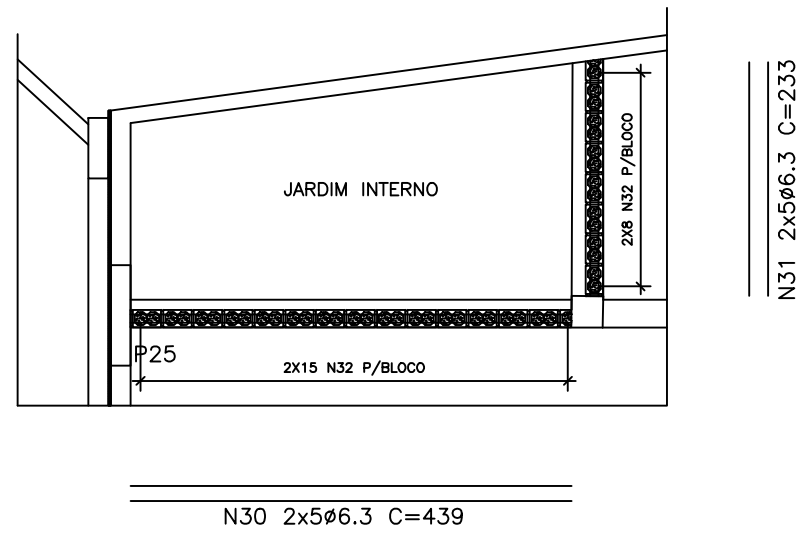


SC10 – SEC. TRANSV. TÍP.

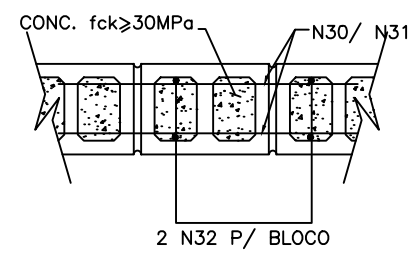
BLOCO 03

ALVENARIA EM BLOCOS DE CONCRETO CHEIOS

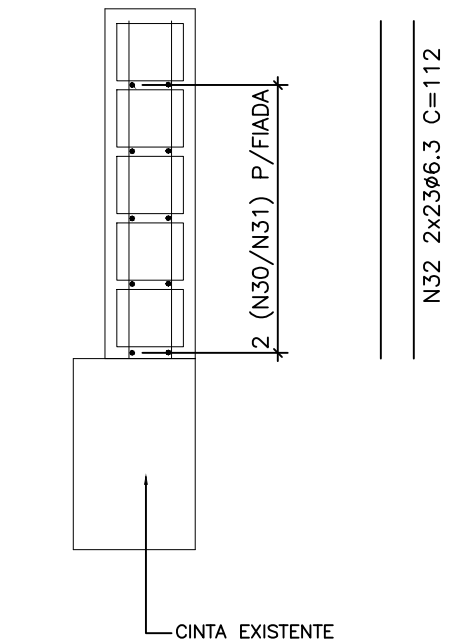
ESCALA: 1/25



PLANTA



PLANTA – DETALHE



SEC. TRANSVERSAL

No.	Ø (mm)	QUANT.	C.UNIT. (cm)	C.TOTAL (m)
1	6.3	1181	100	1181.00
2	6.3	1181	100	1181.00
3	8	14	COR.	2819.88
4	8	13	COR.	450.32
5	6.3	112	130	145.60
6	6.3	112	130	145.60
7	8	14	COR.	313.60
8	6.3	101	120	121.20
9	6.3	101	120	121.20
10	8	14	COR.	282.10
11	6.3	358	190	680.20
12	6.3	716	144	1031.04
13	10	22	COR.	1182.50
14	6.3	36	180	64.80
15	6.3	72	150	108.00
16	10	19	COR.	101.65
17	6.3	1114	110	1225.40
18	6.3	1114	110	1225.40
19	8	14	COR.	3117.10
20	6.3	207	150	310.50
21	6.3	207	150	310.50
22	6.3	216	49	105.84
23	8	18	COR.	745.20
24	6.3	21	240	50.40
25	6.3	42	178	74.76
26	10	22	COR.	57.20
27	6.3	9	140	12.60
28	6.3	9	150	13.50
29	8	15	COR.	24.75
30	6.3	10	439	43.90
31	6.3	10	233	23.30
32	6.3	46	112	51.52

RESUMO – ACD CA50		
Ø	C.TOTAL (m)	MASSA (kg)
10	1341	827
8	7753	3062
6.3	8227	2016
MASSA TOTAL (kg)		5905

QUANT. DE MATERIAIS	
FORMA	548m2
CONCRETO fck>30MPa	94,0m3
CONCRETO fck>10MPa	11,8m3

- NOTAS:
- 1 – MEDIDAS EM cm., ELEVACOES EM m. (MEDIDAS A SEREM CONFIRMADAS NO LOCAL)
 - 2 – CONCRETO: – fck>=30MPa.
 - 3 – PREPARO E ADENSAMENTO DO CONCRETO MECANICOS.
 - 4 – AÇO CA 50.
 - 5 – COBRIMENTO DA ARMAÇÃO: 4,0cm.
 - 6 – CORTAR E/OU ADAPTAR A ARMAÇÃO EM FUNÇÃO DAS MEDIDAS REAIS DAS PEÇAS, EXISTENTES, AFERIDAS "IN LOCO".

REFERÊNCIAS:

REVISÃO	DATA	DESCRIÇÃO
1	29/05/2023	REVISÃO GERAL
2		
3		
4		

LAZULI
ARQUITETURA

@'5'N'i'·@'=
ARQUITETURA
www.lazuliarquitectura.com.br/ facebook: lazuliarquitectura
instagram: @lazuliarquitectura1996
31 3271 3766 - 31 9 9916 3766
lazuli@lazuliarquitectura.com.br

PROPRIETÁRIO/TÍTULO	
MINISTÉRIO PÚBLICO DE MINAS GERAIS CENTRO DE CONVENÇÕES	
PROJETO EXECUTIVO	
DISCIPLINA	
PROJETO ESTRUTURAL	
CONTEÚDO	
SAPATAS CORRIDAS - ARMAÇÃO ALVENARIA EM BL. DE CONCRETO CHEIOS - ARMAÇÃO	
R.T.	COORDENAÇÃO MARILUCE DUQUE DE SOUZA - CAU A21.476-0 ALESSANDRA BRAGA MADUREIRA - CAU: A20.263-0 COLABORADORES
MARICE SETTE MARTINO - CREA/MG: 36.346/D	VERSÃO: 01 FOLHA:
DIREITOS AUTORAIS RESERVADOS	